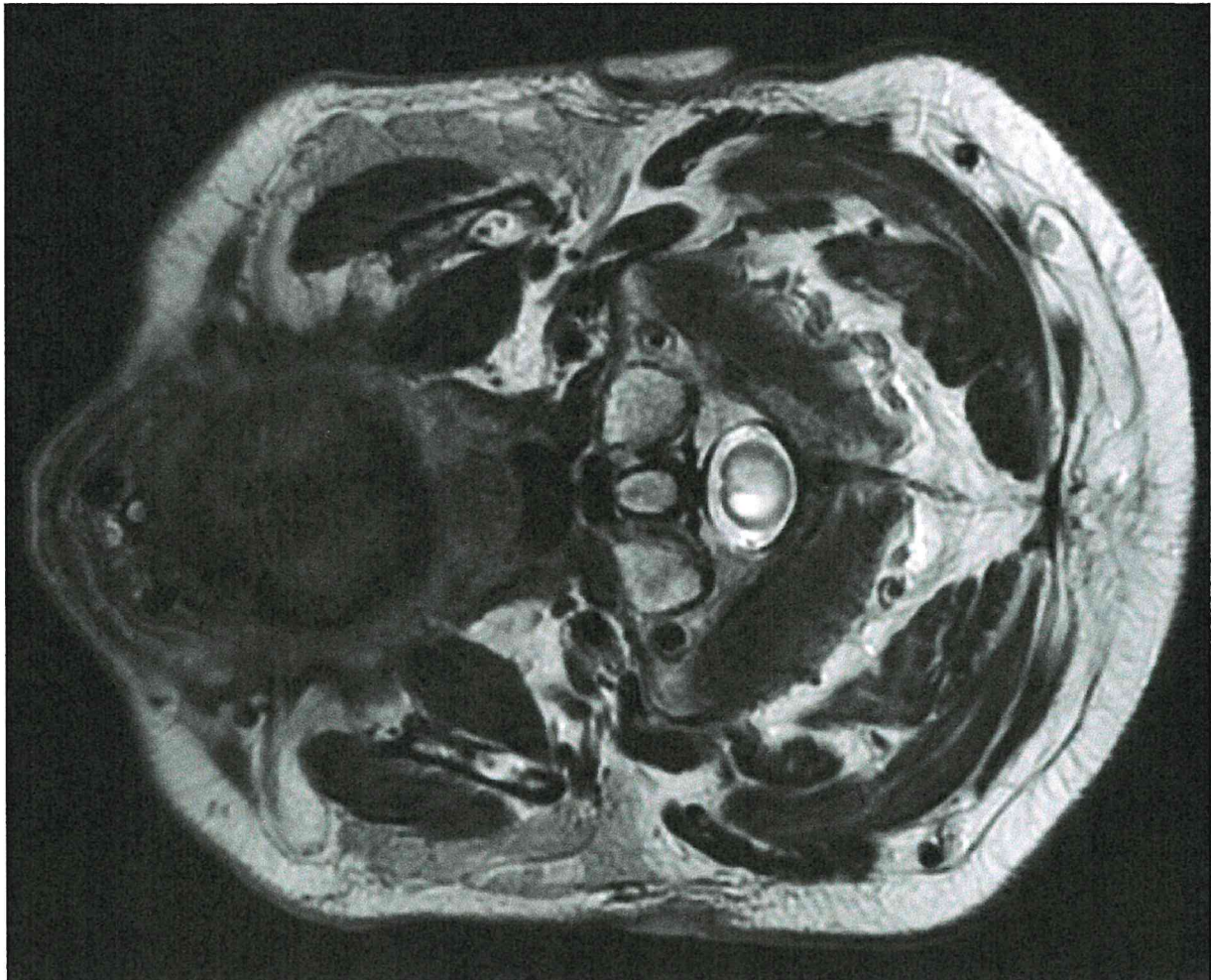
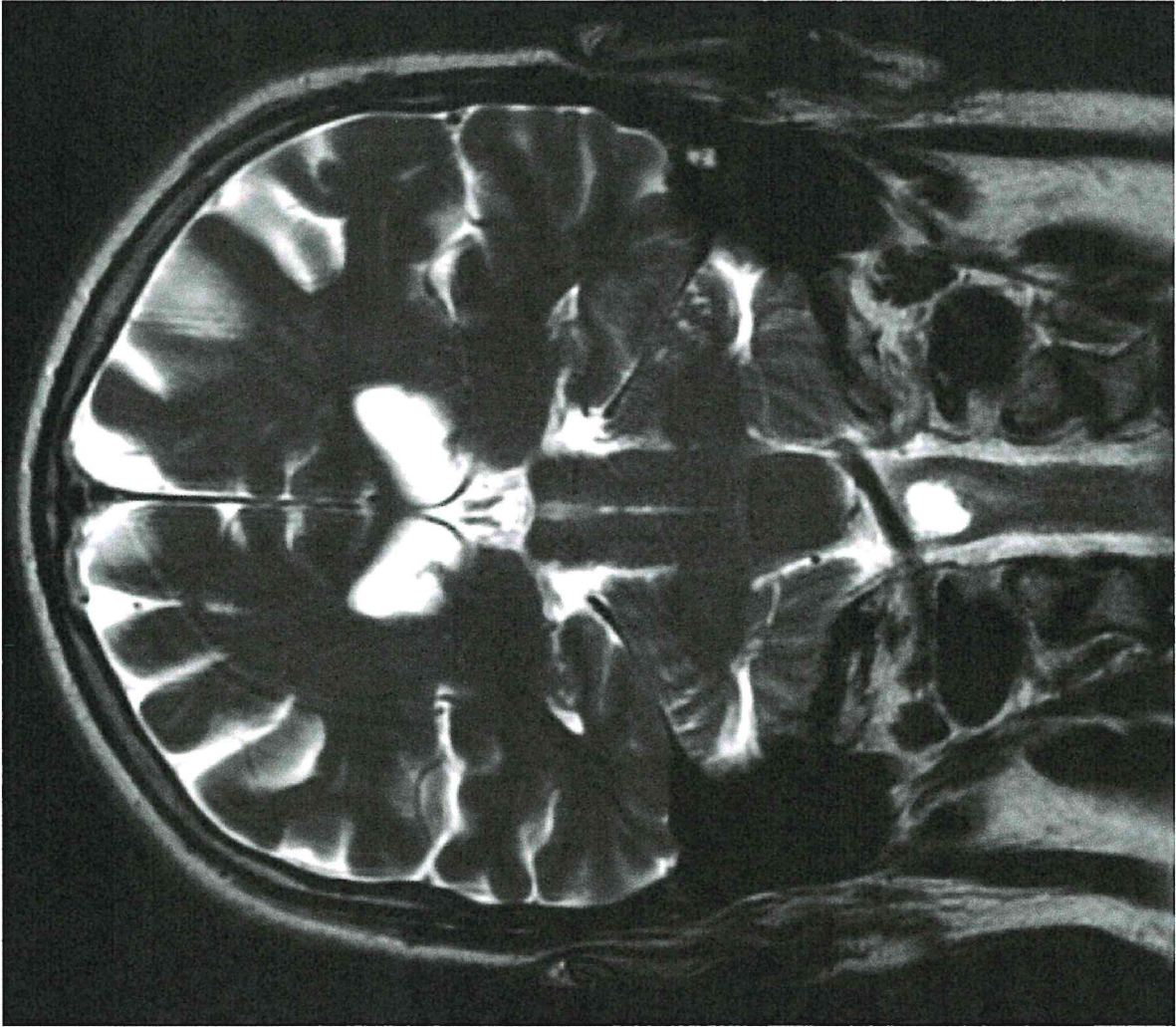
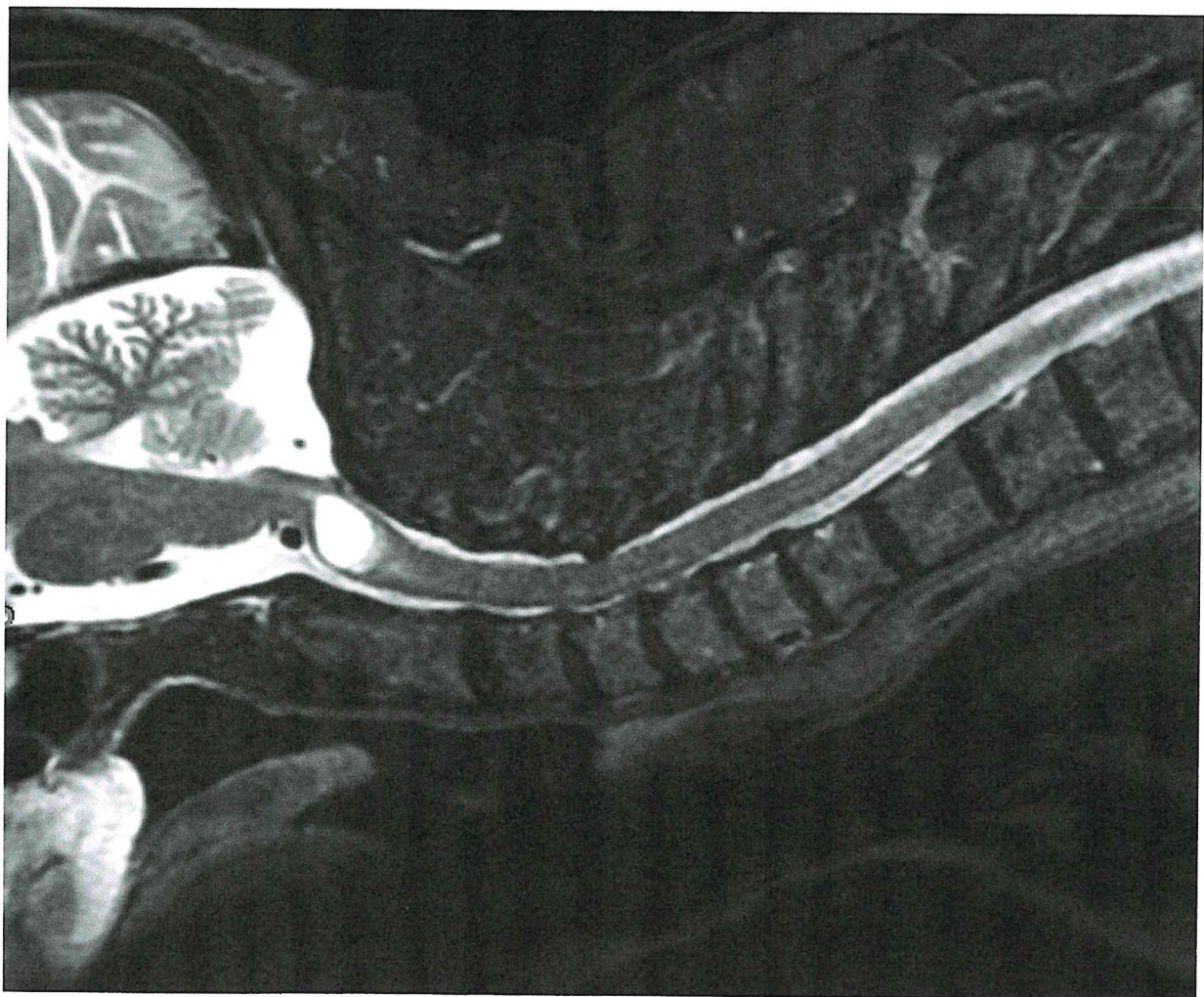
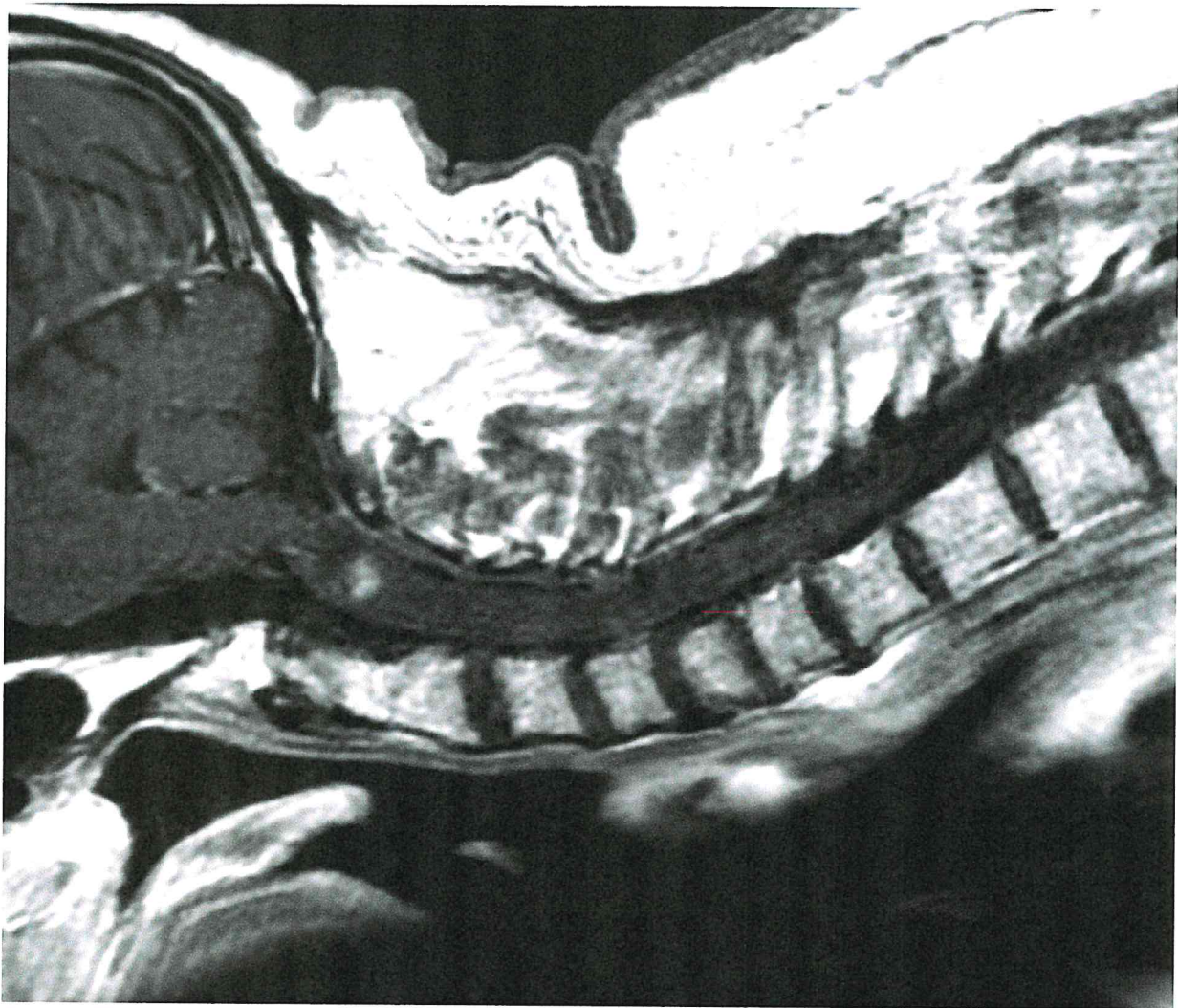


# Maschio, 64aa

- Riconcontro occasionale di lesione midollare cistica C1-C2, nodulo intramurale captante contrasto
- Affetto da M. di Parkinson, non deficit stenici né sensitivi focali







PROVA PRATICA NUMERO 3

3 Tumore intramidollare

A handwritten signature in black ink, consisting of several fluid, connected strokes. The signature is located in the lower right quadrant of the page.